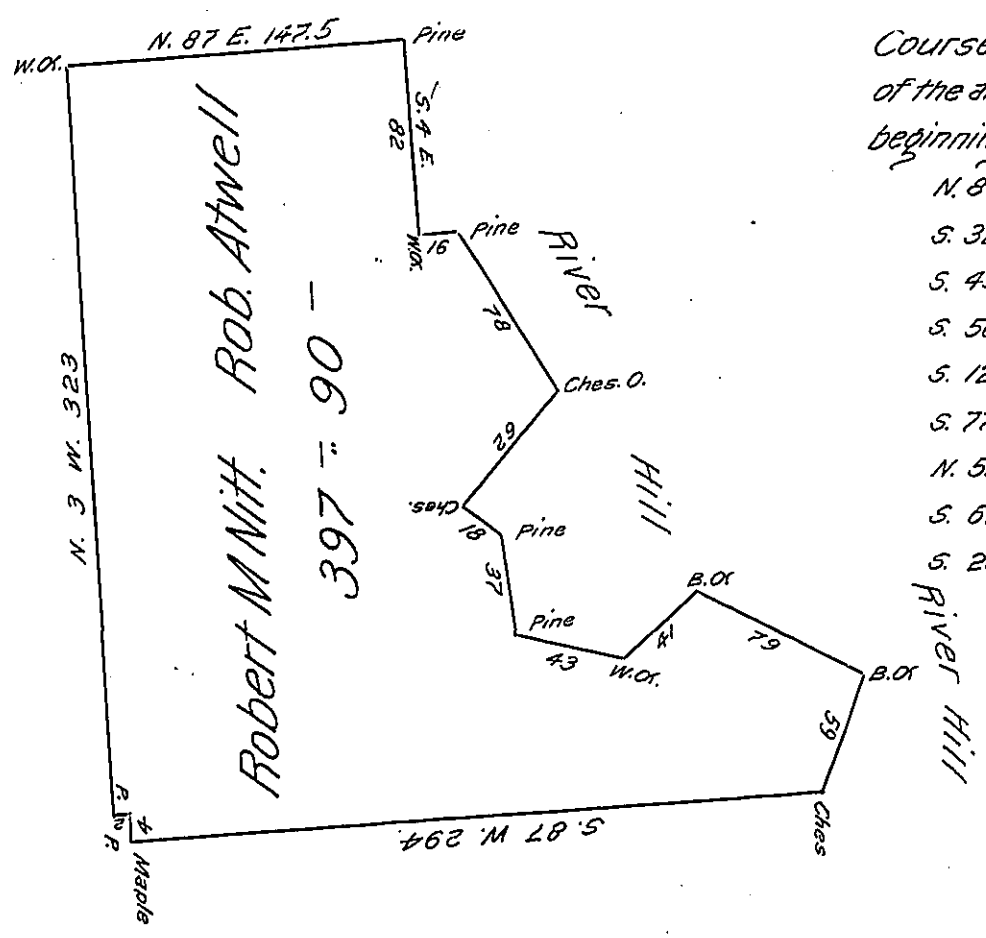


Vacant or Settled

Vacant or Settled



Courses and distances of the annexed Zigzag lines beginning at a W.O. —

- N. 86 E. 16 Pine
- S. 32 E. 78 Ches Oak
- S. 45 W. 62 Ches.
- S. 50 E. 18 Pine
- S. 12 E. 37 Pine
- S. 77 E. 43 W.O.
- N. 55 E. 41 B.O.
- S. 62 E. 79 B.O.
- S. 20 W. 59 Ches.

Wm Dickson

Situate on the waters of Allegany River in District No 3 Allegany County; containing three hundred ninety seven Acres ninety perches and allowance; Survey'd 12-June 1800 on Actual Settlement made by Robert M Nitt and Robert Atwell in May 1797

Surveyor General
of Pennsylvania }

Ben Stokely D.S.

IN TESTIMONY that the above is a copy of the original remaining on file in the Department of Internal Affairs of Pennsylvania, made conformably to an Act of Assembly approved the 16th day of February, 1833, I have hereunto set my Hand and caused the Seal of said Department to be affixed at Harrisburg, this thirtieth day of June 1906.

Isaac Brown
Secretary of Internal Affairs.